

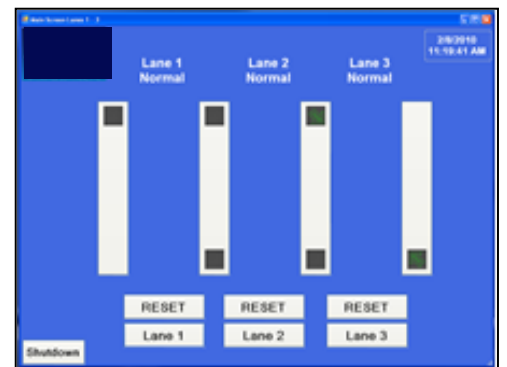
## RLC- TS- 15 Remote Lane Controller - Touch Screen

The Remote Lane Controller – Touch Screen allows access to the lanes via a desk top touch screen control PC. The Touch Screen includes advanced alarm type display, technical service tools, lane beam status, I/O status and on the fly volume adjustment.

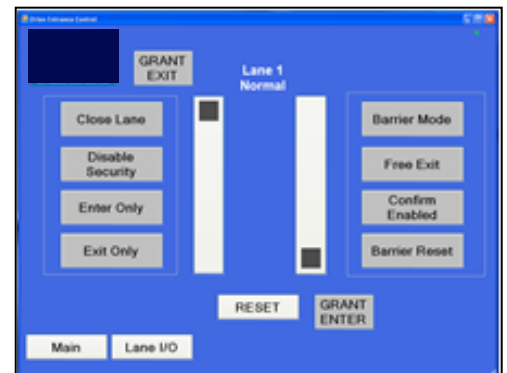
RLC-SW Software only Lane Controller for your PC.



**Main Operation Screen:** RCL-TS user can acknowledge alarm conditions and process visitors from the main operation screen. Also indicates lane and alarm type.

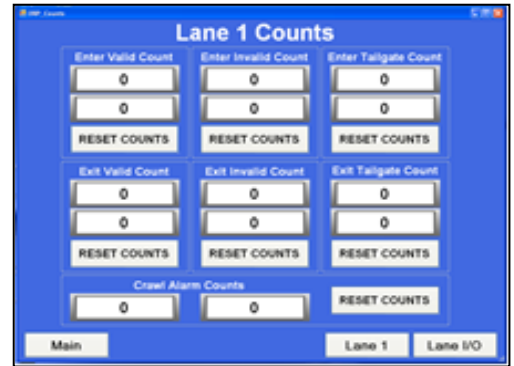


**Lane Screen:** Allows user to access an individual lane for visitor control, alarm viewing, lane security disable, close lane, and change the lane functionality on the fly.

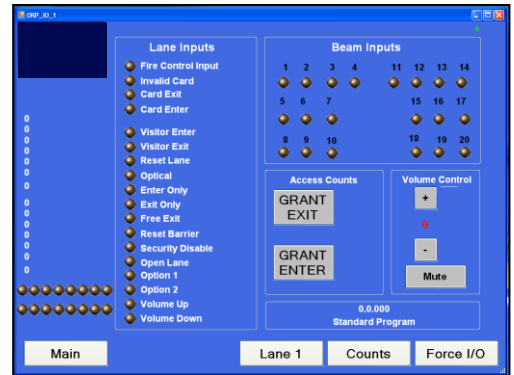


## RLC- TS- 15 Remote Lane Controller - Touch Screen

**Lane Counts:** The system counts all passage activity including individual alarm conditions including tailgate, push-through, and crawl. The lane counts show both resettable and non-resettable.



**Lane I/O:** The Orion Sound Card emits 4 different tones via an 8 ohm speaker to indicate lane status – i.e.; valid transaction, invalid card, unauthorized access attempt, or tailgate attempt. Digitally controlled, the Sound Card allows for volume adjustment on-board pedestal or via the optional touch screen controller.



**Warranty:** Three (3) year return-to-factory warranty on all electrical components.

### Dimensions :

RLC-TS-15	TYPE		
WIDTH Screen	Inches		15
DEPTH of Screen	Inches		2.5
HEIGHT	Inches		15
BASE	Inches	8.5 x	9.5

Dimensions are expressed in inches. The colors presented herein are merely illustrative. Turnstiles.us, Inc. reserves the right to change product specifications without prior notice. Prices and specifications are subject to change without notice. Not responsible for typographical errors.