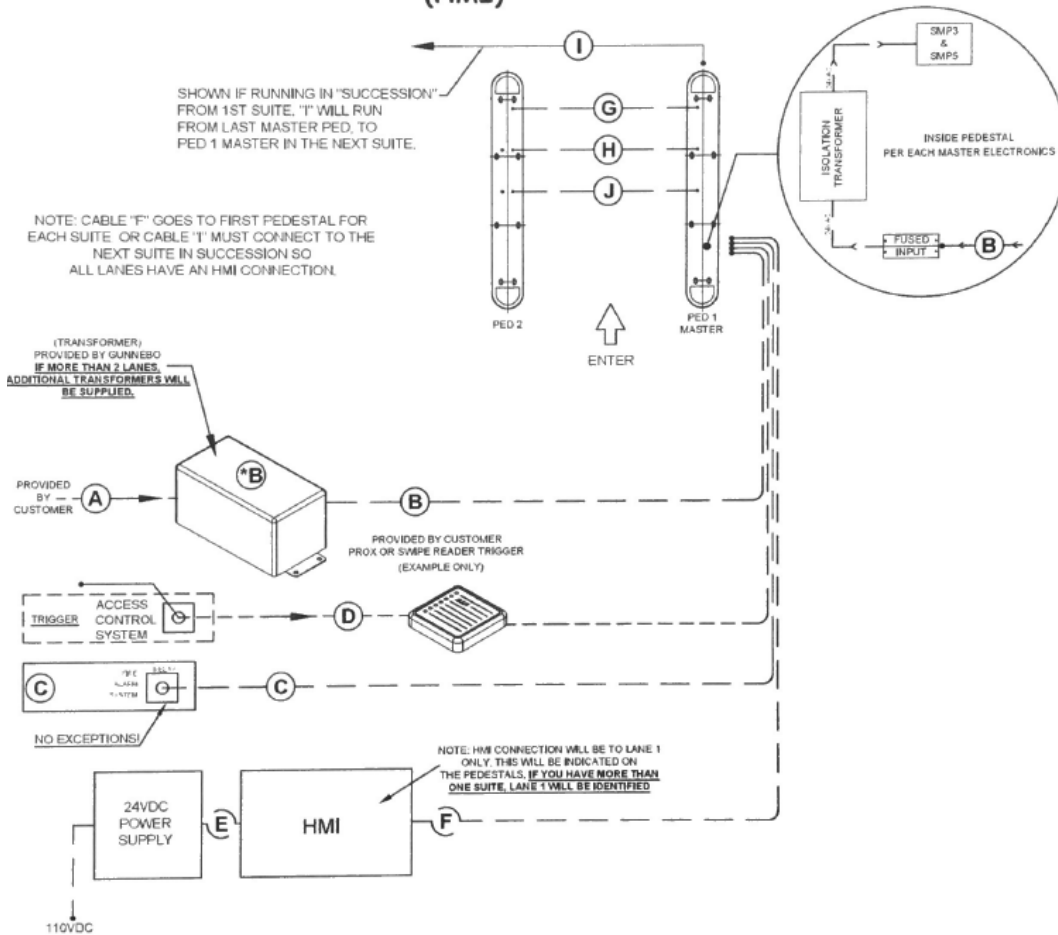


1L/2P OPTISTILE 720 SCHEMATIC (HMI)



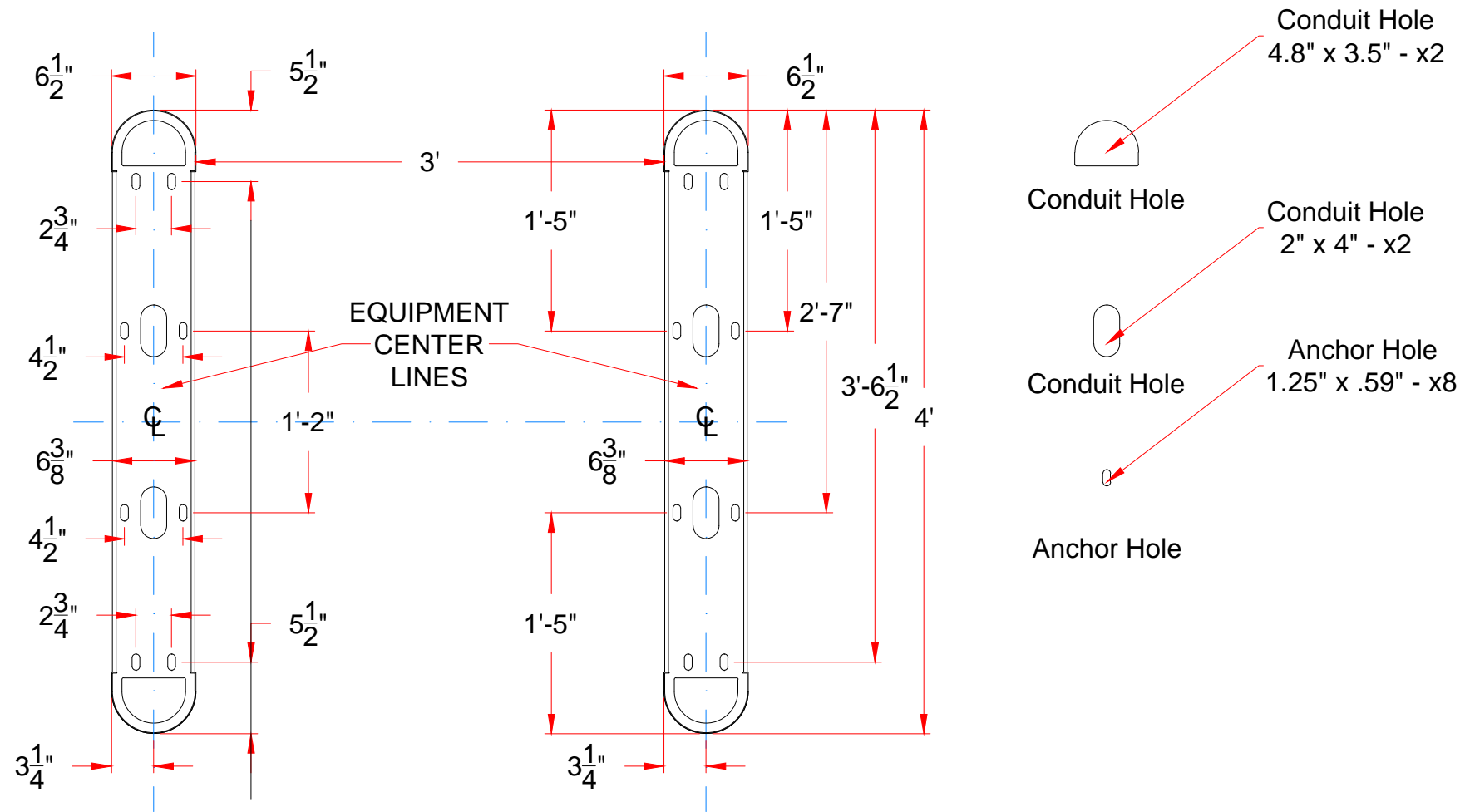
LEGEND:

- A= MAIN POWER 110VAC 50/60Hz 20A TO EACH STEP DOWN TRANSFORMER W/ EARTH GROUND. DO NOT DAISY CHAIN POWER. NO MORE THAN 2 LANES PER STEP DOWN TRANSFORMER ON A SINGLE ISOLATED 20A CIRCUIT.
- B= STEP DOWN TRANSFORMER (110VAC TO 24VAC) - SUPPLIED BY GUNNEBO. THHN 12AWG-3 CONDUCTOR TO EACH MASTER PEDESTAL. MAX 75FT PER TRANSFORMER - NOT SUPPLIED
PEDESTAL CONFIGURATION FOR TRANSFORMER:
*BARRIER PEDESTAL 3 AMPS 4 PEDESTAL MAX (6 AMPS PER LANE).
ALL PEDESTALS MUST BE GROUNDED.
- C= FIRE ALARM SYSTEM, VOLTAGE FREE NORMALLY CLOSED CONTACT, THHN 18AWG-2 CONDUCTOR SHIELDED - NOT SUPPLIED. MUST BE CONNECTED TO AN INDEPENDENT RELAY FOR EACH MASTER PEDESTAL. **NO EXCEPTIONS!**
- D= INPUT/STRIKE, VOLTAGE FREE NORMALLY OPEN CONTACT 0.5-1.0 SECONDS. THHN 18AWG-4 CONDUCTOR (1 PAIR FOR ENTRY AND 1 PAIR FOR EXIT)
- E= HMI POWER 120VAC TO 24VDC STEP DOWN PLUG IN TRANSFORMER.
- G= COOL MUSCLE CABLE. 24AWG-12 CONDUCTOR. (MAX 24FT) - SUPPLIED
- H= TRANSMITTER BEAM POWER 18AWG-2 CONDUCTOR. (MAX 24FT) - SUPPLIED
- I= MASTER TO MASTER INTERCONNECT (FOR THE HMI ONLY) NOT SUPPLIED
- J= PICTOGRAM CABLE. 22AWG 4 CONDUCTOR. (MAX 24FT) SUPPLIED
- K= EXTRA ALARM RELAY OUTPUTS. 20AWG 16 CONDUCTOR. - NOT SUPPLIED

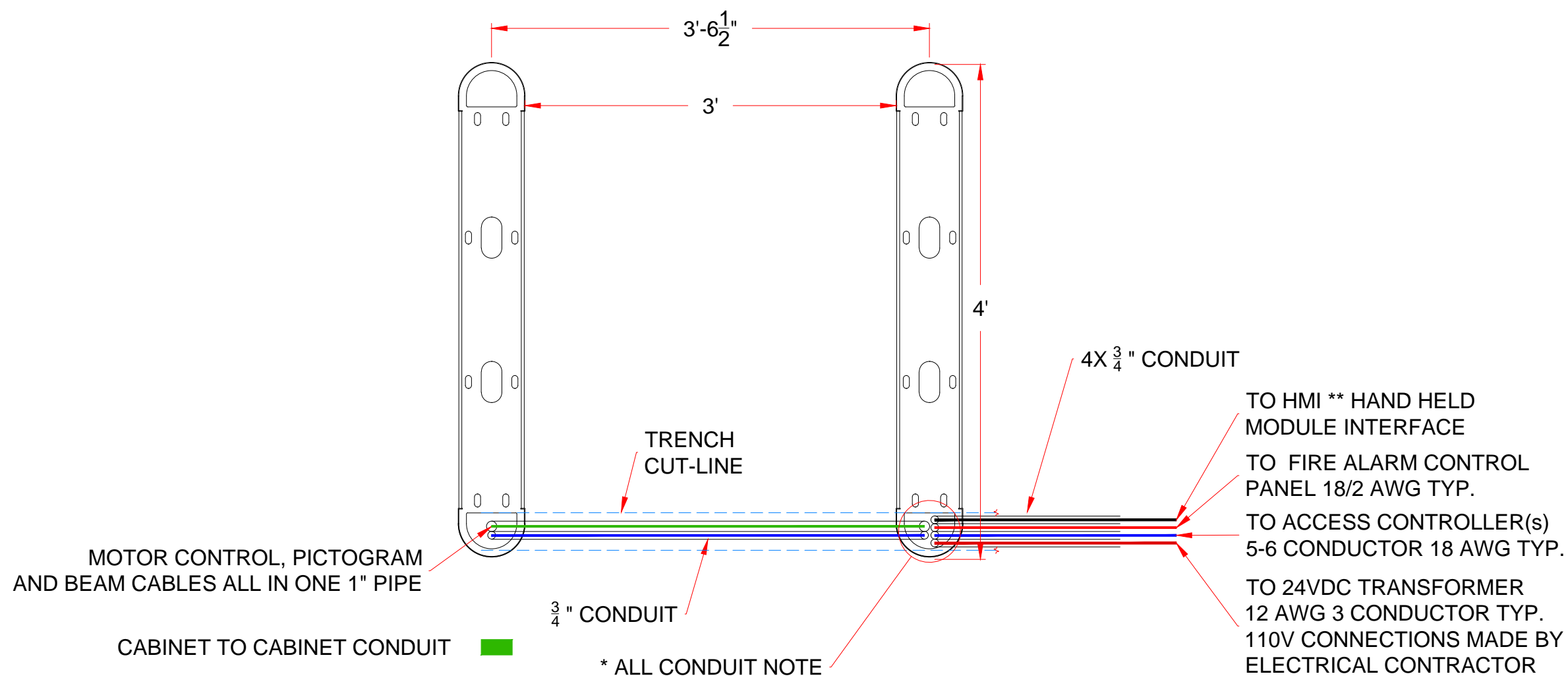
NOTES:

1. ALL CABLING AND CONTAINMENT MUST BE FLUSH TO FINISH FLOOR INSIDE THE PEDESTAL. AVOID ALL EQUIPMENT FIXING POSITIONS.
2. 120VAC POWER, DATA AND LOW VOLTAGE CONTROL CABLES MUST BE RUN IN SEPARATE CONDUITS. NO "DAISY CHAINING" PERMITTED.
3. IT IS RECOMMENDED THAT THE MAIN POWER TO THE UNITS PASSES THROUGH A RESIDUAL CURRENT CIRCUIT DEVICE FOR MAXIMUM SAFETY.
4. ALL WIRES CONNECTED BETWEEN THE PEDESTAL IO BOARDS AND EXTERNAL CONTROL SYSTEMS ARE TO BE VOLTAGE FREE. UNDER NO CIRCUMSTANCES SHOULD EXTERNAL POWER BE APPLIED TO ANY PEDESTAL INPUTS OR OUTPUTS.
5. DO NOT USE CAT-5 CABLING. WIRING OF CAT-5 NOT ALLOWED.

* DIMENSIONS MAY VARY IN ACTUAL INSTALLATION - FABRICATION CHANGES RESERVED *



A OptiStile 720 FH BASE DETAIL
 CL = Center Line



B OptiStile 720 FH CONDUIT DETAIL

* CAT5 NOT ALLOWED
 ** TYPICAL WHEN HMI INCLUDED
 5 CONDUCTOR 22 AWG REQUIRED

AUTHORIZED SIGNATURE: _____ DATE: ___ / ___ / ___

FIRST DRAWN	BY
08/28/17	CJC
REVISED	BY

www.TURNSTILES.us
 8641 South Warhawk Rd. Conifer, CO 80433
 Patrick McAllister Tel: 303-670-1099

Anchor and Conduit Detail	
TULSA FEDERAL BUILDING OptiStile 720FH	
DWG	082817 TULSA FEDERAL BUILDING ELD
DATE	08 / 28 / 17
SCALE =	< >
SHEET - 1 OF 1	