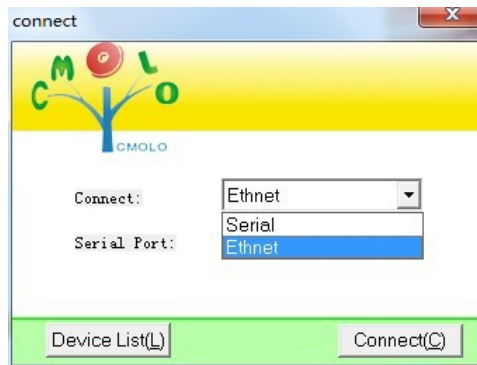


Control Software Specification of CMOLO Turnstile (USB S232)

Prepare accessory DB9-RS232 data wire (USB-RS232)

1.

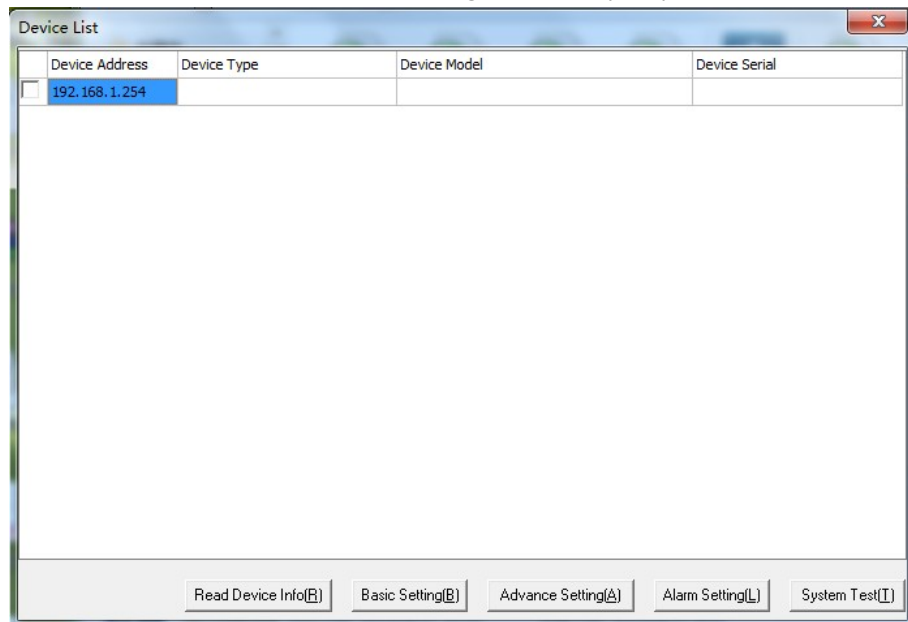
Uncompress the RAR file and open a file named *turnstile.exe*, there will be a register interface. At this interface, you can choose RS485 and Ethernet communication, as picture A.



Picture A

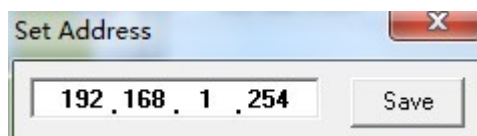
2.

Device List: you will enter the *Device List* after connecting successfully, as picture B.



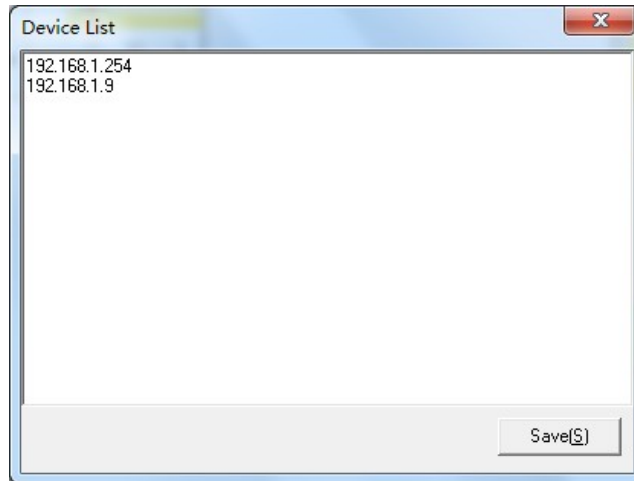
Picture B

When the turnstile is connected with computer at the first time, the initial address is “192.168.1.254”, it will pop a dialog box automatically to modify, as picture C. The address can be changed as “192.168.1.2~192.168.1.253”. Fill in the new address and click “Save” button, and then restart the turnstile.



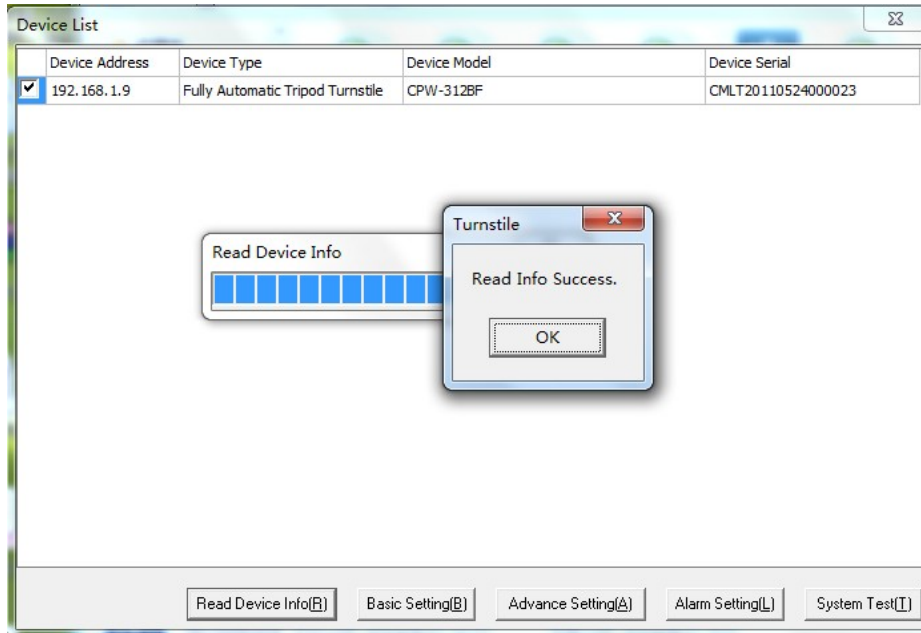
Picture C

3. Add or modify the turnstile address: click the *Device List (L)* in the “connect” interface, there will be a turnstile address list, as picture D. Fill in a new address such as “192.168.1.9” and click “Save(S)”, then the software will restart automatically and turn back to the connect interface.



Picture D

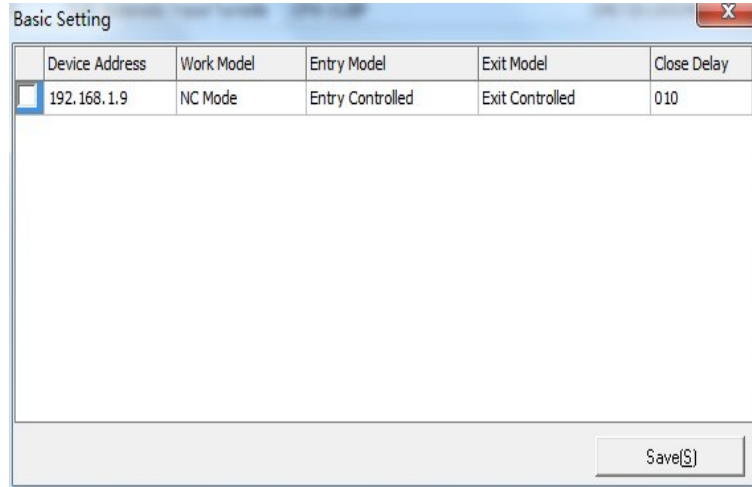
4. Get the information of the turnstile: choose the turnstile address that you need, click the “Read Device Info (R)” button to get the information, as picture E.



Picture E

In this interface, you can see the model of the device, the type of the device and the series number of the device.

(2) Basic Setting: picture F will be shown after clicking the “Basic Setting(B)” button in the interface “Device List”.



Picture F

You can set 4 parameters in this interface.

“NC Mode” “NO Mode” There two optional operation modes, “NC Mode” and “NO Mode”.

There are four kinds of optional entry statuses.

- A) Entry Controlled
- B) Entry Forbidden
- C) Entry Free
- D) Free after Swiping Card

There are four kinds of optional exit statuses.

- A) Exit Controlled
- B) Exit Forbidden
- C) Exit Free
- D) Free after Swiping Card

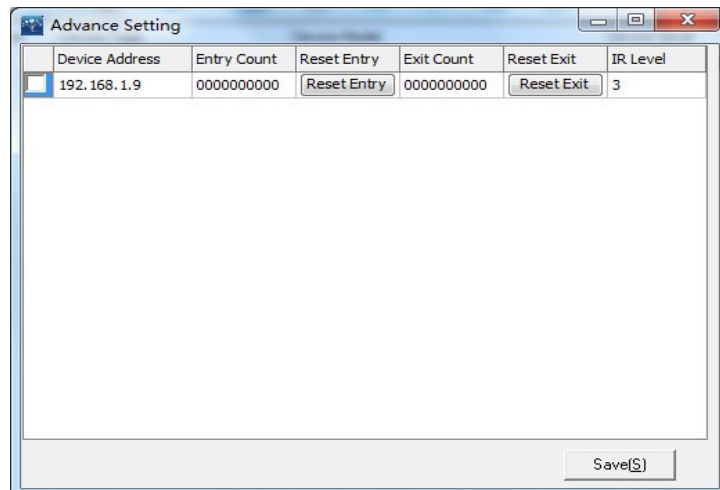
Close Delay: extend the door closing time, and the time can be set 0-999 seconds.

“Save(S)”

Choose the turnstile which needs to be modified and then click “Save(S)”.

(3) “Advance Setting(A)” G

Advanced Setting: click the “Advance Setting(A)” button in the “Device List” interface, as picture G.



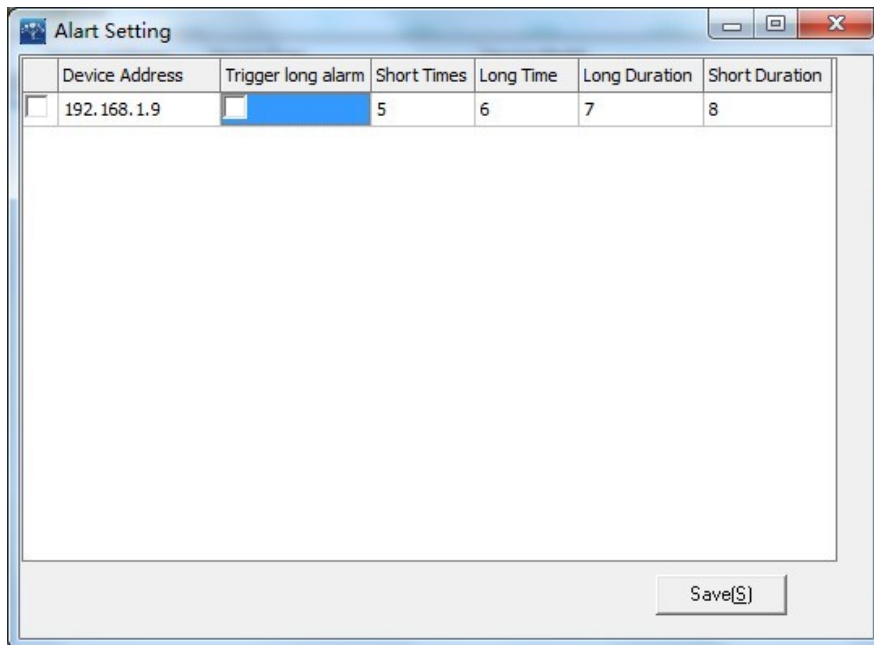
Picture G

“Save(S)”

You can check and clear the passage counting at this interface, adjust the infrared response grade, and the grade is from 0-5. Choose the turnstile which needs to be modified and then click “Save(S)”.

(4) “H”

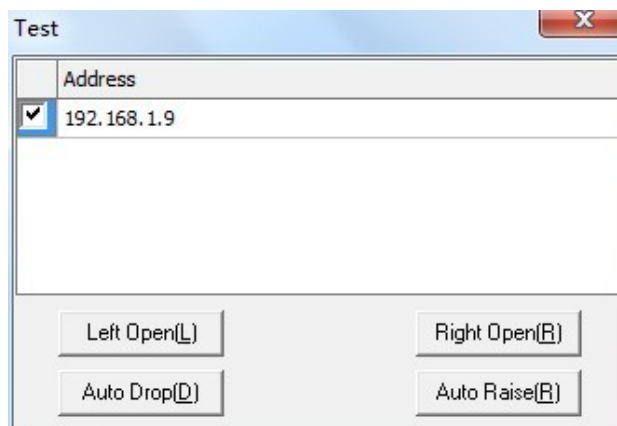
Alarm Setting: picture H will be shown after clicking the “Alarm Setting(A)” button in the “Device List”.



Picture H

(5) “System Test(A)”

System Test: picture I will be shown after clicking the “System Test(A)” button in the “Device List”.



Picture I

You can do 4 basic operation tests through this interface.

Left Open

Right Open

Auto Drop (only effective for the fully automatic and semi-automatic tripod turnstiles)

Auto Raise (only effective for the fully automatic tripod turnstile)